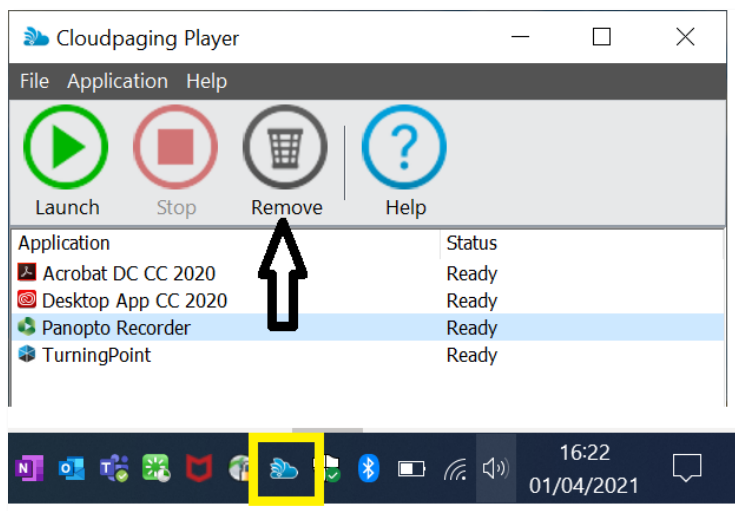


Installing Panopto on Managed Laptops

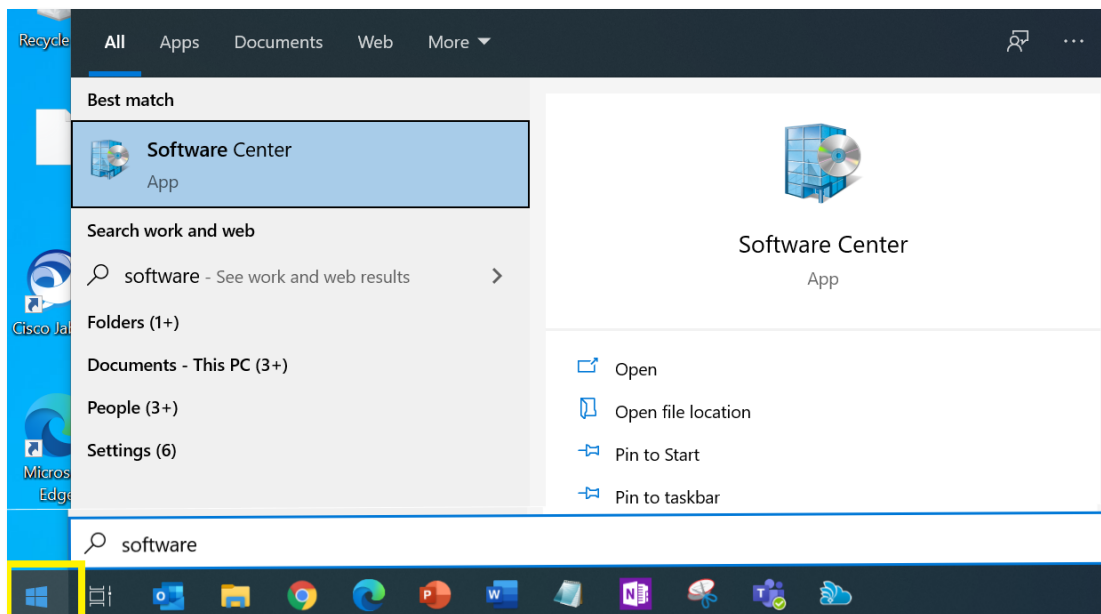
A Managed Laptop means that you no longer need to use remote desktop connections or the Virtual Desktop Service to access the University network, your H&S drives, HR Connect and other University applications. Further details of the managed laptop service can be found on the [IS intranet pages](#).

The Panopto installation programme is available from your Windows Software Center and you do not need administrator permissions to install Panopto.

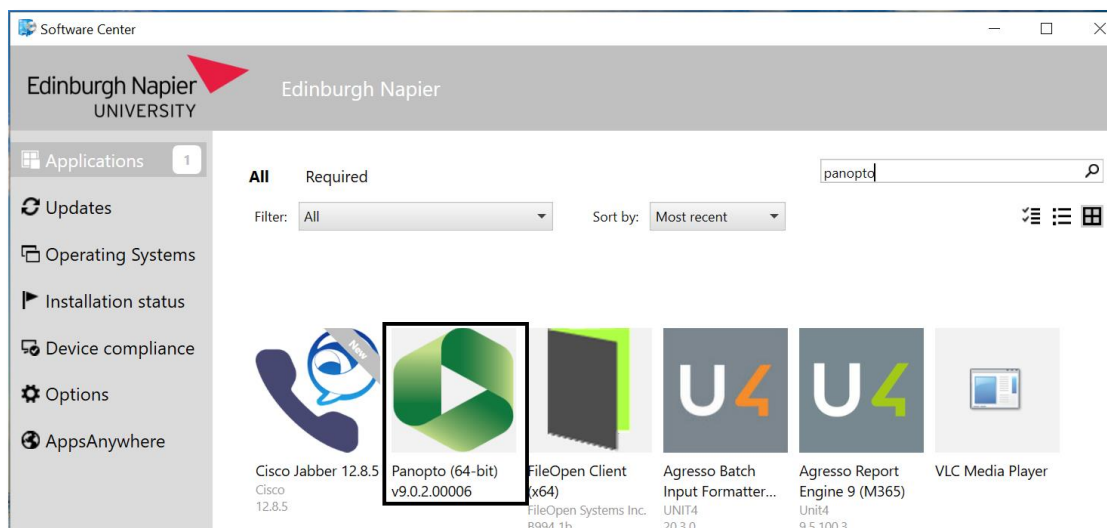
1. If you have previously launched Panopto from Apps Anywhere then remove it from your laptop's CloudPaging player. The installation will fail if Panopto is present in the CloudPaging Player.



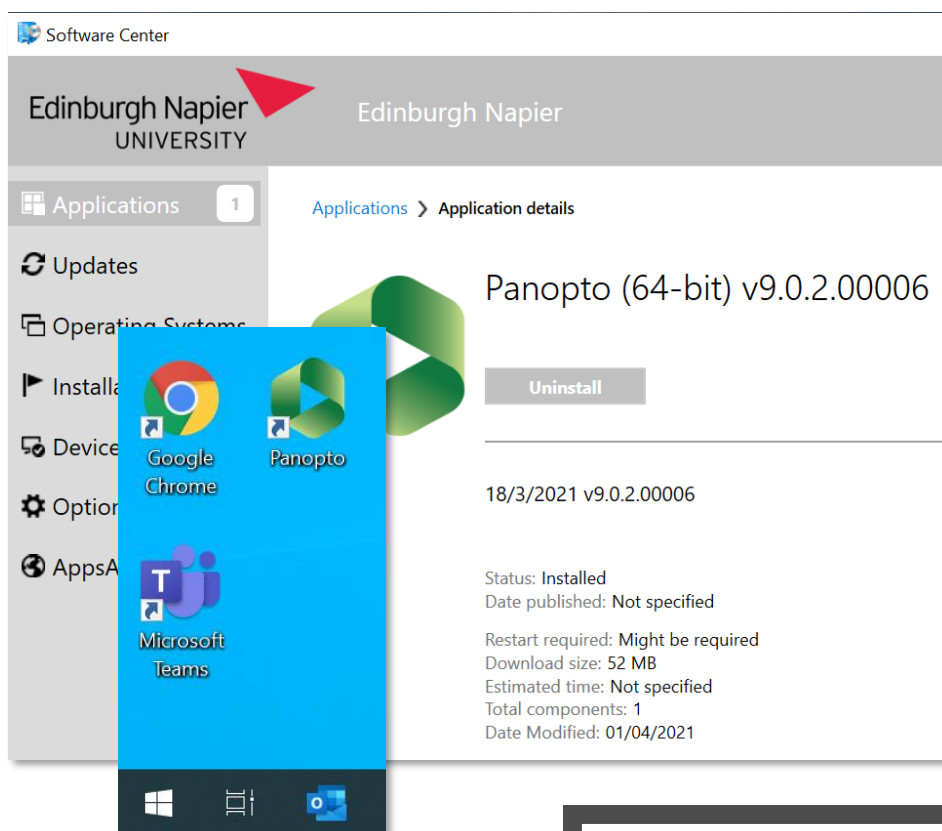
2. Press the Windows key, begin typing “software” and Software Center will be available to open.



3. Double click the Panopto icon or use the search if it's not visible in the list of applications.



4. The completed installation is confirmed in Software Center and the Panopto icon will appear on your desktop.



5. Start Panopto and if prompted to enter a site address then enter **napier.panopto.cloud.eu** and click **Add site**.

If you are not logged in automatically, then choose to the *sign-in with Moodle* option.

