

Moodle Quizzes – additional security settings

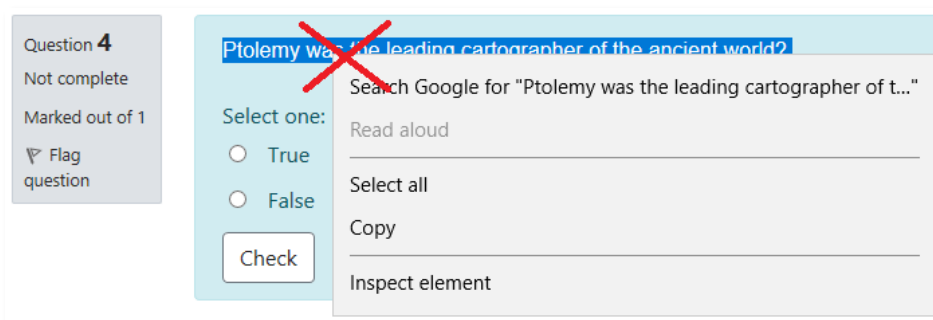
It is true that while computers make certain actions easier, like copy and paste, which can be used for the purposes of cheating, computers also make it easier for teachers to detect cheating by using the quiz reports and log files. There is a limit to what a web based quiz can do to restrict the capabilities of a student's computer while attempting the quiz.

Full screen pop-up with some JavaScript security

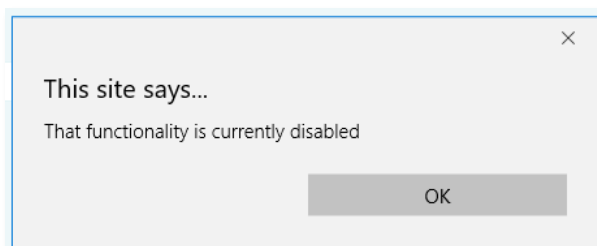
This is a *Browser security* option which provides some additional restrictions.

The screenshot shows the 'Extra restrictions on attempts' section of a Moodle quiz configuration. It includes several options: 'Require password' with a link to enter text; 'Require network address' with an empty text box; 'Enforced delay between 1st and 2nd attempts' and 'Enforced delay between later attempts', both with input fields set to '0' and a 'minutes' dropdown, and an 'Enable' checkbox. At the bottom, the 'Browser security' option is highlighted with a black box and is set to 'Full screen pop-up with some JavaScript security'.

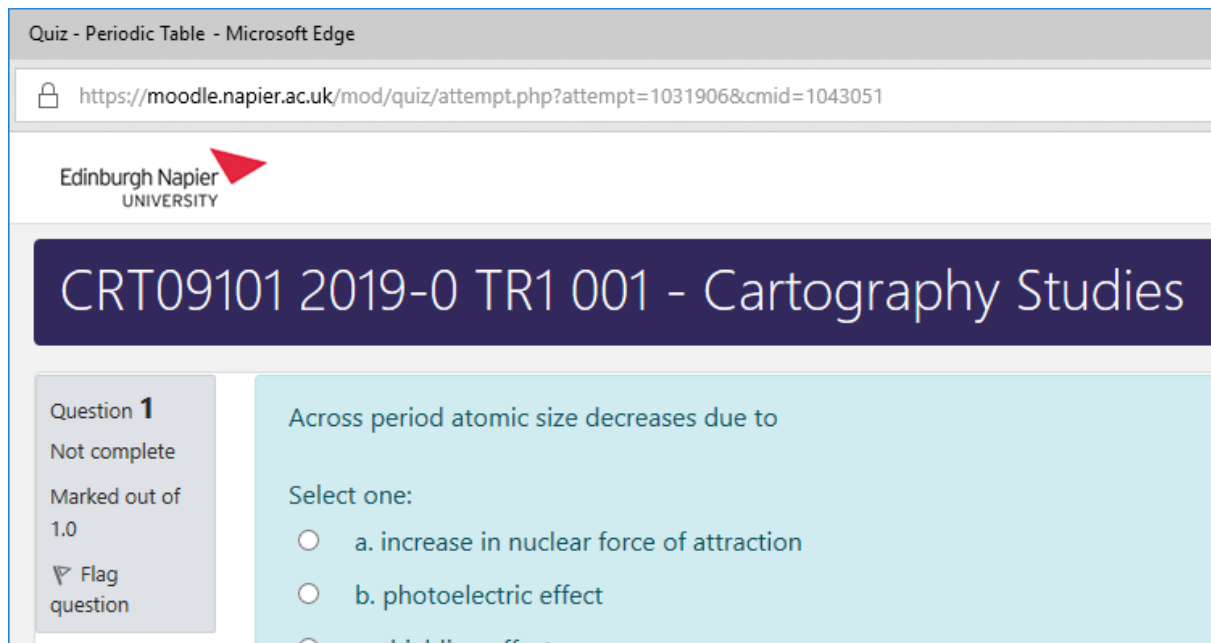
1. The quiz will only start if the student has a JavaScript-enabled web-browser, and this is usually the case for all mainstream web-browsers.
2. The students are prevented from highlighting text, and from using the mouse right click button to copy and paste.



Instead, the following message is displayed.



3. The quiz appears in a full screen popup window that covers all the other windows and has no course navigation controls.
However this browser window can be resized, minimised or moved aside.



The screenshot shows a browser window titled "Quiz - Periodic Table - Microsoft Edge". The address bar contains the URL: <https://moodle.napier.ac.uk/mod/quiz/attempt.php?attempt=1031906&cmid=1043051>. The page header features the Edinburgh Napier University logo. Below the header is a dark blue banner with the text "CRT09101 2019-0 TR1 001 - Cartography Studies". The main content area is divided into two sections. On the left, a grey sidebar contains the following information: "Question 1", "Not complete", "Marked out of 1.0", and a "Flag question" button. The right section has a light blue background and contains the question text: "Across period atomic size decreases due to". Below this text is the instruction "Select one:" followed by two radio button options: "a. increase in nuclear force of attraction" and "b. photoelectric effect".